

Acacia Court

– Classic Room



1



1

There is a lovely community atmosphere at Acacia Court centred around the large internal garden, with its peaceful duckpond. Residents like catching up with each other or with their visitors in the gardens, or in one of several sitting and lounge areas. There are also large multi-purpose spaces which are used for the various social and recreational activities that residents enjoy. A designated support unit provides special assistance to residents who are living with dementia.

[All meals are cooked on-site daily](#) by our chef with two courses served for lunch and three courses for dinner each day.

There is an on-site gymnasium for residents which features specially designed equipment for building strength, increasing fitness and improving or maintaining mobility. Health professionals visit regularly including a podiatrist, dietitian and speech pathologist.

Residents can have their hair done at the on-site hairdresser, with services available twice a week at an additional cost.

There are 70 rooms at Acacia Court.

ADDRESS

81 Tapleys Hill Rd , Hendon SA 5014

Location and Access

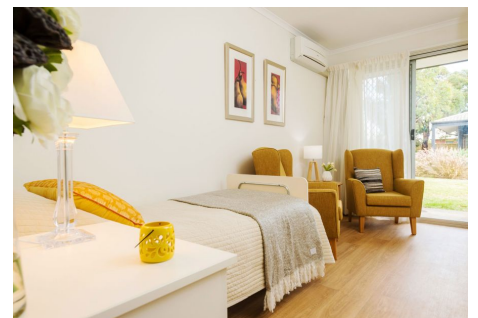
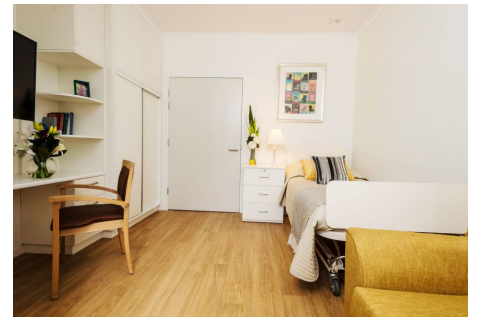
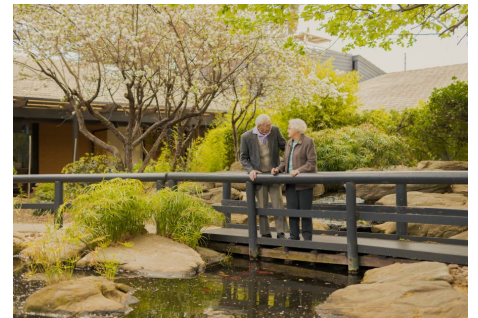
Acacia Court is located in the western Adelaide suburb of Hendon approximately 12km from the Adelaide CBD. The facility is a short drive to the coast, local shops, [Westfield West Lakes shopping centre](#) and the [Queen Elizabeth Hospital](#). There is a bus stop located just outside the main entrance on Tapleys Hill Road and the Seaton Park railway station is also nearby.

General Inclusions

- An electric adjustable high/low bed, bedside cabinet and overway table
- A built-in wardrobe which includes a chest of drawers with a lockable drawer
- Bathrooms consist of a toilet, shower, vanity basin and vanity cabinet
- Private phone connection available
- A call button and access to 24 hour nursing care

Acacia Court - Classic Room Inclusions

- Private ensuite
- Personal access door to an internal courtyard garden
- Floor to ceiling windows
- Rooms range in size from approx. 14-20 sq. m



Classic Room at Acacia Court

Accommodation

Refundable Accommodation Deposit (RAD)	Up to \$550,000
Maximum Permissible Interest Rate (MPIR)	7.96%
Daily Accommodation Payment (DAP)	Up to \$119.95 per day

For those that are required to contribute towards their accommodation costs there are three options:

1. A refundable accommodation deposit (RAD)

Lump sum payment that you may pay to cover your accommodation costs. | A retention of 2% per annum may apply for up to a period of 5 years.

2. Non-refundable daily accommodation payments (DAP)

Non-refundable daily payment that you may pay to cover your accommodation costs. | The DAP may be indexed twice per year in line with CPI.

3. A combination of both

EXAMPLE 1	EXAMPLE 2
RAD \$150,000	RAD \$250,000
DAP \$87.24 per day	DAP \$65.43 per day

Care

The care fee covers day-to-day assistance from carers and clinical staff, wellbeing activities and services such as catering, laundry, cleaning and gardening. It is made up of:

1. Basic Daily fee:

Every person entering residential care pays a Basic Daily fee which is set at 85% of Centrelink's single, full Age Pension.

2. Non-clinical care contribution:

An additional contribution towards the cost of non-clinical care such as bathing, mobility assistance and provision of lifestyle activities. Only people who are assessed as having the means to pay will be required to make this contribution.

3. Hotelling supplement contribution:

An additional contribution towards the cost of everyday living services in residential aged care. This includes services such as catering, cleaning and laundry. Only people who are assessed as having the means to pay will be required to pay this contribution.

Optimal Care packages

To complement our high quality service, we provide Optimal Care packages that include a variety of features for your added care and comfort. These packages are part of the Higher Everyday Living fee (HELFF), as mentioned above (in the Fees section). [View our Optimal Care packages flyer](#) for more information.

These pricing arrangements apply to new residents entering care on or after November 1, 2025. The agreed Daily Accommodation Payment may be deducted from the Refundable Accommodation Deposit in order to meet an agreed amount of accommodation payment. This will result in additional interest amounts being charged on the amount deducted. Residents or their representatives may wish to seek independent financial advice regarding which option suits their specific financial circumstances.

Prices are current as at May 25, 2026, 4:05 am and are subject to change without notice.

MPIR rate: Currently 7.96% and is updated quarterly by the Federal Government.