

# Hope Valley

## – Classic Room



1



1

Hope Valley's gardens, courtyards and open plan living and dining areas allow space for residents to participate in recreation and spend time with their family and friends to celebrate milestones, socialise and share a meal together.

Secure indoor and outdoor areas can be enjoyed by residents living with dementia and their families.

[Our chef prepares all food on-site daily](#) with two courses served for lunch and three courses for dinner each day.

Health professionals, including a podiatrist, speech pathologist and dietitian, visit regularly. Our physiotherapist supervises the on-site gym which features specially designed equipment, and facilitates a program focused on exercise and reablement. There is also a varied social program that residents can choose to participate in including crafts, games and physical activities.

A dedicated hairdresser also provides services to residents in the on-site salon.

### ADDRESS

95-97 Awoonga Rd , Hope Valley SA 5090

## Location and Access

Hope Valley is located in Adelaide's north eastern suburbs close to local shops, [Westfield Tea Tree Plaza shopping centre](#), the [Modbury Hospital](#) and [North Eastern Community Hospital](#), plus several bus stops and the O-Bahn Interchange.

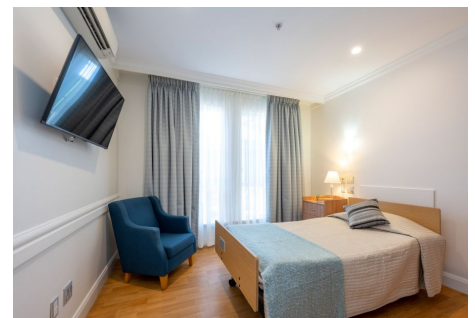
There are some visiting limitations in place. Please [visit Eldercare's response to COVID-19 page for more information](#).

## General Inclusions

- Private ensuite consists of a toilet, shower, vanity basin and vanity cabinet
- An electric adjustable high/low bed, bedside cabinet, bedside chair and overway table
- A built-in wardrobe which includes a chest of drawers
- Heating and cooling
- Access to 24 hour nursing care

## Hope Valley - Classic Room Inclusions

- Private ensuite
- Rooms range in size from approx. 18-20 sq. m



## Classic Room at Hope Valley

### Accommodation

To enter residential care, you will be required to pay accommodation costs and care fees. We also provide Additional and/or Extra Services packages depending on the facility you choose.

<b>Refundable Accommodation Deposit (RAD)</b>	<b>Up to \$575,000</b>
<b>Maximum Permissible Interest Rate (MPIR)</b>	<b>8.17%</b>
<b>Daily Accommodation Payment (DAP)</b>	<b>Up to \$128.71 per day</b>

For those that are required to contribute towards their accommodation costs there are three options:

1. A fully refundable accommodation deposit (RAD)
2. Non-refundable daily accommodation payments (DAP)
3. A combination of both

The RAD is based on the published price of your preferred room type.

The DAP is calculated from the RAD amount of your preferred room type and is broken down into a daily payment; similar to rent. A government-prescribed interest rate, called the Maximum Permissible Interest Rate (MPIR), applies to this payment.

#### EXAMPLE 1

**RAD**  
**\$150,000**

**DAP**  
**\$95.14 per day**

#### EXAMPLE 2

**RAD**  
**\$250,000**

**DAP**  
**\$72.75 per day**

Residents with limited financial means may have part, or all, of their accommodation costs paid for by the Australian Government.

### Care

The care fee covers day-to-day assistance from carers and clinical staff, wellbeing activities and services such as catering, laundry, cleaning and gardening. It is made up of:

#### 1. Basic Daily fee:

Every person entering residential care pays a Basic Daily fee which is set at 85% of Centrelink's single, full Age Pension.

#### 2. Means-tested care fee:

An additional contribution towards the cost of your care based on your asset and income levels. This fee is set by the Department of Human Services when they receive your completed Request for a Combined Assets and Income Assessment form.

### Additional services

To complement our high quality service, we provide an Additional Services package that includes a variety of features for your added care and comfort. [View our Additional Services flyer](#) for more information.

These pricing arrangements apply to new residents entering care on or after July 1, 2014. The agreed Daily Accommodation Payment may be deducted from the Refundable Accommodation Deposit in order to meet an agreed amount of accommodation payment. This will result in additional interest amounts being charged on the amount deducted. Residents or their representatives may wish to seek independent financial advice regarding which option suits their specific financial circumstances.

Prices are current as at April 30, 2025, 5:20 pm and are subject to change without notice.

MPIR rate: Currently 8.17% and is updated quarterly by the Federal Government.