

Evanston Park – Classic Room



1



1

All rooms at Evanston Park are single rooms with ensuites, and some have kitchenettes. Some rooms are located in the support unit which provides specialised assistance to residents living with dementia. Expansive established gardens and two large courtyards offer peaceful spaces to enjoy time outdoors.

[Our chef prepares all food on-site daily](#) with two courses served for lunch and three courses for dinner each day. Residents can also celebrate special events with their family and friends on-site with in-house catering available at additional cost. There are private spaces that can be reserved for these occasions.

There is a varied social program that residents can choose to participate in including crafts, games and physical activities. Our physiotherapist supervises the on-site gym which features specially designed equipment for building strength, increasing fitness and improving or maintaining mobility. A dentist, optometrist and audiologist visit periodically and local medical specialists can visit upon request.

Residents can get their hair done at the on-site hairdressing salon with services offered weekly at an additional cost.

ADDRESS

17 Morrow Ave , Evanston Park SA 5116

Location and Access

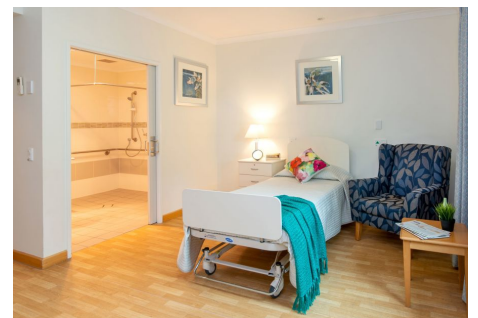
Eldercare Evanston Park is located in the northern suburbs, a short walk from the [Gawler Green shopping centre](#) and a 10-minute drive from the centre of Gawler which features shops, cafés, pubs and parks. Adelaide's buses and trains service the area with the Evanston Railway Station and several bus stops close by.

General Inclusions

- An electric adjustable high/low bed, bedside cabinet, bedside chair and overway table
- A built-in wardrobe which includes a chest of drawers with a lockable drawer
- Wall-mounted television
- Private ensuite consists of a toilet, shower, vanity basin and vanity cabinet
- Reverse-cycle heating and cooling with individual temperature control
- Private phone connection available
- A call button and access to 24 hour nursing care

Evanston Park - Classic Room Inclusions

- Private ensuite
- Rooms range in size from approx. 20-22 sq. m



Classic Room at Evanston Park

Accommodation

| | |
|---|-------------------------------|
| Refundable Accommodation Deposit (RAD) | Up to \$500,000 |
| Maximum Permissible Interest Rate (MPIR) | 8.43% |
| Daily Accommodation Payment (DAP) | Up to \$115.48 per day |

For those that are required to contribute towards their accommodation costs there are three options:

1. A refundable accommodation deposit (RAD)

Lump sum payment that you may pay to cover your accommodation costs. | A retention of 2% per annum may apply for up to a period of 5 years.

2. Non-refundable daily accommodation payments (DAP)

Non-refundable daily payment that you may pay to cover your accommodation costs. | The DAP may be indexed twice per year in line with CPI.

3. A combination of both

| EXAMPLE 1 | EXAMPLE 2 |
|--------------------------------------|--------------------------------------|
| RAD \$150,000 | RAD \$250,000 |
| DAP \$80.84 per day | DAP \$57.74 per day |

Care

The care fee covers day-to-day assistance from carers and clinical staff, wellbeing activities and services such as catering, laundry, cleaning and gardening. It is made up of:

1. Basic Daily fee:

Every person entering residential care pays a Basic Daily fee which is set at 85% of Centrelink's single, full Age Pension.

2. Non-clinical care contribution:

An additional contribution towards the cost of non-clinical care such as bathing, mobility assistance and provision of lifestyle activities. Only people who are assessed as having the means to pay will be required to make this contribution.

3. Hotelling supplement contribution:

An additional contribution towards the cost of everyday living services in residential aged care. This includes services such as catering, cleaning and laundry. Only people who are assessed as having the means to pay will be required to pay this contribution.

Optimal Care packages

To complement our high quality service, we provide Optimal Care packages that include a variety of features for your added care and comfort. These packages are part of the Higher Everyday Living fee (HELFF), as mentioned above (in the Fees section). [View our Optimal Care packages flyer](#) for more information.

These pricing arrangements apply to new residents entering care on or after November 1, 2025. The agreed Daily Accommodation Payment may be deducted from the Refundable Accommodation Deposit in order to meet an agreed amount of accommodation payment. This will result in additional interest amounts being charged on the amount deducted. Residents or their representatives may wish to seek independent financial advice regarding which option suits their specific financial circumstances.

Prices are current as at July 9, 2026, 9:21 pm and are subject to change without notice.

MPIR rate: Currently 8.43% and is updated quarterly by the Federal Government.