

Goodwood

– Premium Plus



1



1

Eldercare Goodwood introduces the new standard in aged care, providing a state-of-the-art facility that prioritises the wellbeing and comfort of its residents. Located on Victoria St, Goodwood, this impressive 100-bed aged care home spans over 10,000 square metres, and is set to open its doors in 2025.

This purpose-built development embodies the best practices in aged care living standards. Every room offers a spacious 26 sqm layout, with state-of-the-art technology for safety and entertainment. Resident rooms are in small groups where living spaces are separated from communal areas. This commitment to ample living space ensures residents have room to relax, maintain their privacy, and create a sense of home.

The design thoughtfully incorporates various living spaces to enhance socialisation, relaxation, and engagement. These include a well-equipped kitchen, a comfortable dining area, inviting lounge spaces, peaceful retreats for quiet moments, a designated TV area for entertainment, and versatile activity spaces. Residents can socialise over a cup of tea or coffee at the café, enjoy the tranquil atmosphere in a beautiful conservatory that overlooks the serene rear gardens, or be serenaded by the baby grand piano in the foyer.

Eldercare Goodwood goes beyond the physical aspects of the facility by offering a comprehensive model of care that considers the varying needs, preferences, interests, levels of ability and life stages of its residents, as well as specialist spiritual, palliative, dementia and wellbeing programs.

ADDRESS

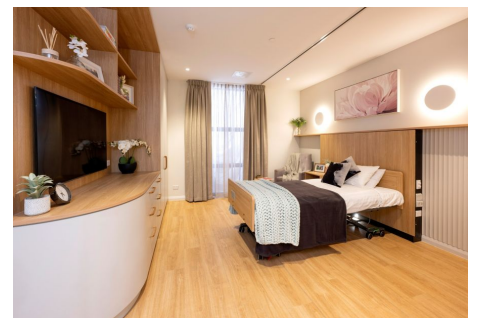
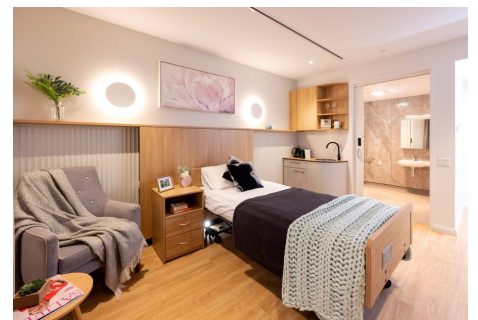
7-21 Victoria St , Goodwood SA 5034

General Inclusions

- Contemporary timber bed furnishings and matching fittings including an electric adjustable high/low bed, bedside cabinet and overway table
- A portable call bell solution enabling access to 24 hour nursing care through a variety of equipment types
- A built-in wardrobe which includes hanging space and a chest of drawers with a lockable drawer
- Modern, private ensuite consists of a toilet, shower, vanity basin and vanity cabinet
- Reverse-cycle heating and cooling with individual temperature control
- Phone connection available

Goodwood - Premium Plus Inclusions

- Kitchenette
- Private ensuite
- Floor to ceiling windows
- Rooms are approx. 26 sq. m



Premium Plus at Goodwood

Accommodation

Refundable Accommodation Deposit (RAD)	Up to \$935,000
Maximum Permissible Interest Rate (MPIR)	7.96%
Daily Accommodation Payment (DAP)	Up to \$203.91 per day

For those that are required to contribute towards their accommodation costs there are three options:

1. A refundable accommodation deposit (RAD)

Lump sum payment that you may pay to cover your accommodation costs. | A retention of 2% per annum may apply for up to a period of 5 years.

2. Non-refundable daily accommodation payments (DAP)

Non-refundable daily payment that you may pay to cover your accommodation costs. | The DAP may be indexed twice per year in line with CPI.

3. A combination of both

EXAMPLE 1	EXAMPLE 2
RAD \$150,000	RAD \$250,000
DAP \$171.2 per day	DAP \$149.39 per day

Care

The care fee covers day-to-day assistance from carers and clinical staff, wellbeing activities and services such as catering, laundry, cleaning and gardening. It is made up of:

1. Basic Daily fee:

Every person entering residential care pays a Basic Daily fee which is set at 85% of Centrelink's single, full Age Pension.

2. Non-clinical care contribution:

An additional contribution towards the cost of non-clinical care such as bathing, mobility assistance and provision of lifestyle activities. Only people who are assessed as having the means to pay will be required to make this contribution.

3. Hotelling supplement contribution:

An additional contribution towards the cost of everyday living services in residential aged care. This includes services such as catering, cleaning and laundry. Only people who are assessed as having the means to pay will be required to pay this contribution.

Optimal Care packages

To complement our high quality service, we provide Optimal Care packages that include a variety of features for your added care and comfort. These packages are part of the Higher Everyday Living fee (HELFF), as mentioned above (in the Fees section). [View our Optimal Care packages flyer](#) for more information.

These pricing arrangements apply to new residents entering care on or after November 1, 2025. The agreed Daily Accommodation Payment may be deducted from the Refundable Accommodation Deposit in order to meet an agreed amount of accommodation payment. This will result in additional interest amounts being charged on the amount deducted. Residents or their representatives may wish to seek independent financial advice regarding which option suits their specific financial circumstances.

Prices are current as at June 14, 2026, 6:00 am and are subject to change without notice.

MPIR rate: Currently 7.96% and is updated quarterly by the Federal Government.