

Sash Ferguson

– Classic Vista Room



1



1

Expansive lawns, big trees, rose gardens and landscaped garden beds surround Sash Ferguson whilst courtyards provide peaceful places for residents to enjoy time outside alone or with their family and friends. Most rooms enjoy garden views and many include kitchenettes. There are a small number of rooms in the support unit, which provides specialised assistance to residents living with dementia.

[Our chef prepares all food on-site daily](#) with two courses served for lunch and three courses for dinner each day.

There is a varied social program that residents can choose to participate in including crafts, games and physical activities. There is also a gymnasium on site with equipment to assist residents in building strength, increasing fitness and improving or maintaining mobility.

Doctors and allied health professionals regularly visit Sash Ferguson providing all residents with quality health care at home. The Adelaide Hills Community Health Service at Mount Barker Hospital also provides after-hours and emergency services.

Sash Ferguson's on-site hairdressing salon allows residents to have their hair done in-house at an additional cost.

ADDRESS

8 Fletcher Road , Mount Barker SA 5251

Location and Access

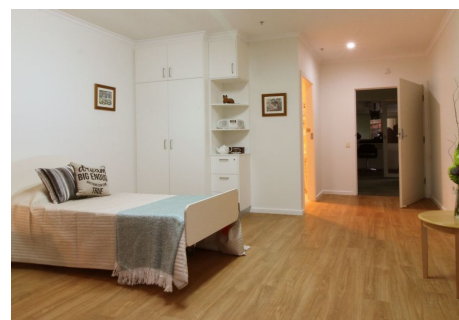
Sash Ferguson is located in Mount Barker near the main street with cafes and supermarkets nearby. The [Mt Barker Homemaker Centre](#), [Mt Barker Village Shopping Centre](#) and [Mt Barker Medical Clinic](#) are all a short walk away. Eldercare's [five retirement living locations in Mt Barker](#) allow residents' loved ones to live nearby, participate in activities and share meals.

General Inclusions

- An electric adjustable high/low bed, bedside cabinet and overway table
- A built-in wardrobe which includes a chest of drawers with a lockable drawer
- Private ensuite consists of a toilet, shower, vanity basin and vanity cabinet
- Reverse-cycle heating and cooling with individual temperature control
- Private phone connection available
- A call button and access to 24 hour nursing care

Sash Ferguson - Classic Vista Room Inclusions

- Private ensuite
- Pleasant outlook
- Rooms range in size from approx. 20-32 sq. m



Classic Vista Room at Sash Ferguson

Accommodation

To enter residential care, you will be required to pay accommodation costs and care fees. We also provide Additional and/or Extra Services packages depending on the facility you choose.

Refundable Accommodation Deposit (RAD)	Up to \$525,000
Maximum Permissible Interest Rate (MPIR)	8.17%
Daily Accommodation Payment (DAP)	Up to \$117.51 per day

For those that are required to contribute towards their accommodation costs there are three options:

1. A fully refundable accommodation deposit (RAD)
2. Non-refundable daily accommodation payments (DAP)
3. A combination of both

The RAD is based on the published price of your preferred room type.

The DAP is calculated from the RAD amount of your preferred room type and is broken down into a daily payment; similar to rent. A government-prescribed interest rate, called the Maximum Permissible Interest Rate (MPIR), applies to this payment.

EXAMPLE 1	EXAMPLE 2
RAD \$150,000	RAD \$250,000
DAP \$83.94 per day	DAP \$61.56 per day

Residents with limited financial means may have part, or all, of their accommodation costs paid for by the Australian Government.

Care

The care fee covers day-to-day assistance from carers and clinical staff, wellbeing activities and services such as catering, laundry, cleaning and gardening. It is made up of:

1. Basic Daily fee:

Every person entering residential care pays a Basic Daily fee which is set at 85% of Centrelink's single, full Age Pension.

2. Means-tested care fee:

An additional contribution towards the cost of your care based on your asset and income levels. This fee is set by the Department of Human Services when they receive your completed Request for a Combined Assets and Income Assessment form.

Additional services

To complement our high quality service, we provide an Additional Services package that includes a variety of features for your added care and comfort. [View our Additional Services flyer](#) for more information.

These pricing arrangements apply to new residents entering care on or after July 1, 2014. The agreed Daily Accommodation Payment may be deducted from the Refundable Accommodation Deposit in order to meet an agreed amount of accommodation payment. This will result in additional interest amounts being charged on the amount deducted. Residents or their representatives may wish to seek independent financial advice regarding which option suits their specific financial circumstances.

Prices are current as at April 19, 2025, 1:08 am and are subject to change without notice.

MPIR rate: Currently 8.17% and is updated quarterly by the Federal Government.