

## Seaford

### – Premium Room



1



1

All rooms at Seaford are single rooms with ensuites, and some have kitchenettes. Residents can enjoy many outdoor areas across the home, including landscaped gardens with seating and water features, the balcony and a gazebo area for BBQs and social occasions. A specialised support unit, which features secure courtyard gardens and entertaining areas, supports residents living with dementia.

[Our chef prepares all food on-site daily](#) with two courses served for lunch and three courses for dinner each day. Residents can also celebrate special events with their family and friends on-site and there are private spaces that can be reserved for these occasions.

Health professionals, including a podiatrist, speech pathologist and dietitian, visit regularly. Our physiotherapist and occupational therapist supervise the on-site gym which features specially designed equipment for building strength, increasing fitness and improving or maintaining mobility. There is also a varied social program that residents can choose to participate in including crafts, games and physical activities.

Seaford's dedicated hairdresser offers services at the in-house salon at an additional cost.

#### ADDRESS

100 Seaford Rd , Seaford SA 5169

## Location and Access

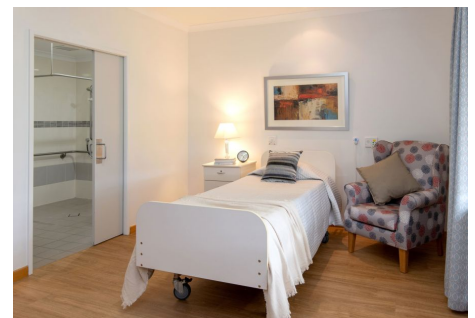
Eldercare Seaford is a short walk to the [Seaford Central Shopping Centre](#) and local pharmacy and a short drive to cafés, the local hospital, medical centre and ambulance service. The site is easily accessible by public transport with bus stops and the Seaford railway station nearby.

## General Inclusions

- An electric adjustable high/low bed, bedside cabinet, bedside chair and overway table
- A built-in wardrobe which includes a chest of drawers with a lockable drawer
- Wall-mounted television
- Private ensuite consists of a toilet, shower, vanity basin and vanity cabinet
- Reverse-cycle heating and cooling with individual temperature control
- Private phone connection available
- A call button and access to 24 hour nursing care

## Seaford - Premium Room Inclusions

- Private ensuite
- Kitchenette
- Pleasant outlook
- Rooms range in size from approx. 20-22 sq. m



## Premium Room at Seaford

### Accommodation

To enter residential care, you will be required to pay accommodation costs and care fees. We also provide Additional and/or Extra Services packages depending on the facility you choose.

|   |                               |
|---|-------------------------------|
| <b>Refundable Accommodation Deposit (RAD)</b>   | <b>Up to \$525,000</b>        |
| <b>Maximum Permissible Interest Rate (MPIR)</b> | <b>8.34%</b>                  |
| <b>Daily Accommodation Payment (DAP)</b>        | <b>Up to \$119.96 per day</b> |

For those that are required to contribute towards their accommodation costs there are three options:

1. A fully refundable accommodation deposit (RAD)
2. Non-refundable daily accommodation payments (DAP)
3. A combination of both

The RAD is based on the published price of your preferred room type.

The DAP is calculated from the RAD amount of your preferred room type and is broken down into a daily payment; similar to rent. A government-prescribed interest rate, called the Maximum Permissible Interest Rate (MPIR), applies to this payment.

| EXAMPLE 1                            | EXAMPLE 2                            |
|--------------------------------------|--------------------------------------|
| <b>RAD</b><br><b>\$150,000</b>       | <b>RAD</b><br><b>\$250,000</b>       |
| <b>DAP</b><br><b>\$85.69 per day</b> | <b>DAP</b><br><b>\$62.84 per day</b> |

Residents with limited financial means may have part, or all, of their accommodation costs paid for by the Australian Government.

### Care

The care fee covers day-to-day assistance from carers and clinical staff, wellbeing activities and services such as catering, laundry, cleaning and gardening. It is made up of:

#### 1. Basic Daily Care fee:

Every person entering residential care pays a Basic Daily Care fee which is set at 85% of Centrelink's single, full Age Pension.

#### 2. Means-tested care fee:

An additional contribution towards the cost of your care based on your asset and income levels. This fee is set by the Department of Human Services when they receive your completed Request for a Combined Assets and Income Assessment form.

### Additional services

To complement our high quality service, we provide an Additional Services package that includes a variety of features for your added care and comfort. [View our Additional Services flyer](#) for more information.

These pricing arrangements apply to new residents entering care on or after July 1, 2014. The agreed Daily Accommodation Payment may be deducted from the Refundable Accommodation Deposit in order to meet an agreed amount of accommodation payment. This will result in additional interest amounts being charged on the amount deducted. Residents or their representatives may wish to seek independent financial advice regarding which option suits their specific financial circumstances.

Prices are current as at May 19, 2024, 9:34 am and are subject to change without notice.

MPIR rate: Currently 8.34% and is updated quarterly by the Federal Government.