

## The Lodge – Premium Room



1



1

Surrounded by jacaranda trees and landscaped gardens whilst being close to both the city parklands and the cafés and boutique shopping in Hyde Park, The Lodge enjoys one of Adelaide's finest addresses. Recent extensive renovations have created bespoke aged care facilities whilst maintaining the traditional character of the elegant original buildings. A secure support unit supports residents who need specialised dementia care and a family room with private bathroom is available for family members and friends to stay overnight.

All meals are cooked on-site daily by our chef with cooked meals served for breakfast and three courses served for lunch and dinner each day.

Health professionals, including a speech pathologist and podiatrist, visit regularly. Our physiotherapist and occupational therapist supervise the on-site gym which features specially designed equipment for building strength, increasing fitness and improving or maintaining mobility. There is also a varied social program that residents can choose to participate in including crafts, games and physical activities.

The Lodge's dedicated hairdresser also provides services to residents at the on-site salon.

### ADDRESS

14-24 King William Road , Wayville SA 5034

## Location and Access

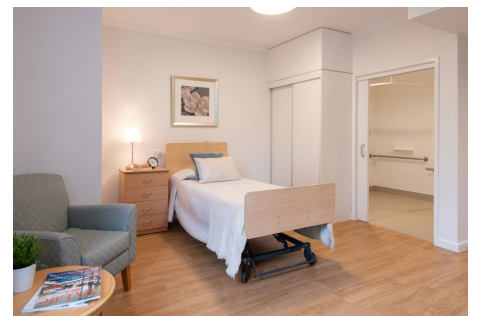
The Lodge is a five-minute drive from the Adelaide CBD and can be accessed via the nearby City to Glenelg tram line. It is also a short walk to the Hyde Park shopping and café precinct and the Adelaide parklands.

## General Inclusions

- Contemporary timber bed furnishings and matching fittings including an electric adjustable high/low bed, bedside cabinet and overway table
- A built-in wardrobe which includes hanging space and a chest of drawers with a lockable drawer
- Wall-mounted television
- Modern, private ensuite consists of a toilet, shower, vanity basin and vanity cabinet
- Reverse-cycle heating and cooling with individual temperature control
- Private phone connection available
- A portable call bell solution enabling access to 24 hour nursing care through a variety of equipment types

## The Lodge - Premium Room Inclusions

- Private ensuite
- Kitchenette
- Pleasant outlook
- Rooms range in size from approx. 22-27 sq. m



## Premium Room at The Lodge

### Accommodation

To enter residential care, you will be required to pay accommodation costs and care fees. We also provide Additional and/or Extra Services packages depending on the facility you choose.

<b>Refundable Accommodation Deposit (RAD)</b>	<b>Up to \$750,000</b>
<b>Maximum Permissible Interest Rate (MPIR)</b>	<b>8.17%</b>
<b>Daily Accommodation Payment (DAP)</b>	<b>Up to \$167.88 per day</b>

For those that are required to contribute towards their accommodation costs there are three options:

1. A fully refundable accommodation deposit (RAD)
2. Non-refundable daily accommodation payments (DAP)
3. A combination of both

The RAD is based on the published price of your preferred room type.

The DAP is calculated from the RAD amount of your preferred room type and is broken down into a daily payment; similar to rent. A government-prescribed interest rate, called the Maximum Permissible Interest Rate (MPIR), applies to this payment.

EXAMPLE 1	EXAMPLE 2
<b>RAD</b> <b>\$150,000</b>	<b>RAD</b> <b>\$250,000</b>
<b>DAP</b> <b>\$134.31 per day</b>	<b>DAP</b> <b>\$111.92 per day</b>

Residents with limited financial means may have part, or all, of their accommodation costs paid for by the Australian Government.

### Care

The care fee covers day-to-day assistance from carers and clinical staff, wellbeing activities and services such as catering, laundry, cleaning and gardening. It is made up of:

#### 1. Basic Daily fee:

Every person entering residential care pays a Basic Daily fee which is set at 85% of Centrelink's single, full Age Pension.

#### 2. Means-tested care fee:

An additional contribution towards the cost of your care based on your asset and income levels. This fee is set by the Department of Human Services when they receive your completed Request for a Combined Assets and Income Assessment form.

### Additional and Extra Services

To complement our high quality service, we provide an exclusive Additional Services package that includes premium features for your added care and comfort. [View our Additional Services flyer](#) for more information.

These pricing arrangements apply to new residents entering care on or after July 1, 2014. The agreed Daily Accommodation Payment may be deducted from the Refundable Accommodation Deposit in order to meet an agreed amount of accommodation payment. This will result in additional interest amounts being charged on the amount deducted. Residents or their representatives may wish to seek independent financial advice regarding which option suits their specific financial circumstances.

Prices are current as at May 10, 2025, 5:16 pm and are subject to change without notice.

MPIR rate: Currently 8.17% and is updated quarterly by the Federal Government.