

The Village

– Deluxe Room



1



1

All rooms at The Village are spacious single rooms with ensuites that have ready access to communal social areas and established gardens. Some rooms are located in the support unit which provides specialised assistance to residents living with dementia. There are plenty of outdoor areas, including a courtyard, for residents to enjoy fresh air in the gardens alone or with family and friends.

[All food is prepared on-site daily by our chef](#) with two courses served for the lunch and evening meals daily. Families are encouraged to share meals with their loved ones and a dedicated room can be used to celebrate private functions.

Visiting speech pathologists, podiatrists, audiologists, optometrists and massage therapists offer a comprehensive allied health service to residents and an Eldercare physiotherapist also helps residents to build strength, increase fitness and improve or maintain mobility using the on-site gym. There is also a varied social program that residents can choose to participate in including crafts, games and physical activities.

Residents can have their hair done at The Village's on-site hairdressing salon with appointments available weekly at an additional cost.

ADDRESS

Centenary Avenue , Maitland SA 5573

Location and Access

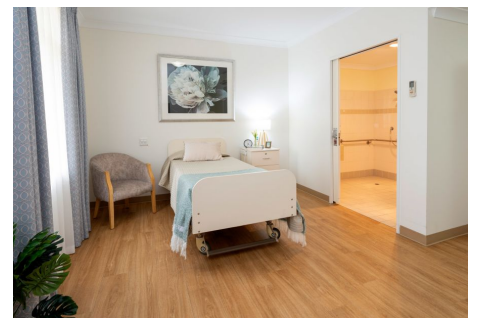
The Village is located on the outskirts of Maitland in the Yorke Peninsula region and is 15 minutes from the coast. The hospital, medical centre and ambulance service as well as local shops including the supermarket, chemist, bakery and post office are a short walk away. Eldercare's [retirement living units](#), surrounded by landscaped gardens and lawns, are adjacent to The Village and allow residents' loved ones to live nearby.

General Inclusions

- An electric adjustable high/low bed, bedside cabinet, bedside chair and overway table
- A built-in wardrobe which includes a chest of drawers with a lockable drawer
- Private ensuite consists of a toilet, shower, vanity basin and vanity cabinet
- Reverse-cycle heating and cooling with individual temperature control
- Private phone connection available
- A call button and access to 24 hour nursing care

The Village - Deluxe Room Inclusions

- Rooms are located in the modern wing of the facility
- Large ensuite bathroom
- Small kitchenette
- Wall-mounted television
- Pleasant outlook with large windows overlooking landscaped gardens
- Rooms are a spacious 28 sq. m



Deluxe Room at The Village

Accommodation

Refundable Accommodation Deposit (RAD)	Up to \$400,000
Maximum Permissible Interest Rate (MPIR)	7.96%
Daily Accommodation Payment (DAP)	Up to \$87.23 per day

For those that are required to contribute towards their accommodation costs there are three options:

1. A refundable accommodation deposit (RAD)

Lump sum payment that you may pay to cover your accommodation costs. | A retention of 2% per annum may apply for up to a period of 5 years.

2. Non-refundable daily accommodation payments (DAP)

Non-refundable daily payment that you may pay to cover your accommodation costs. | The DAP may be indexed twice per year in line with CPI.

3. A combination of both

EXAMPLE 1	EXAMPLE 2
RAD \$150,000	RAD \$250,000
DAP \$54.53 per day	DAP \$32.72 per day

Care

The care fee covers day-to-day assistance from carers and clinical staff, wellbeing activities and services such as catering, laundry, cleaning and gardening. It is made up of:

1. Basic Daily fee:

Every person entering residential care pays a Basic Daily fee which is set at 85% of Centrelink's single, full Age Pension.

2. Non-clinical care contribution:

An additional contribution towards the cost of non-clinical care such as bathing, mobility assistance and provision of lifestyle activities. Only people who are assessed as having the means to pay will be required to make this contribution.

3. Hotelling supplement contribution:

An additional contribution towards the cost of everyday living services in residential aged care. This includes services such as catering, cleaning and laundry. Only people who are assessed as having the means to pay will be required to pay this contribution.

Optimal Care packages

To complement our high quality service, we provide Optimal Care packages that include a variety of features for your added care and comfort. These packages are part of the Higher Everyday Living fee (HELFF), as mentioned above (in the Fees section). [View our Optimal Care packages flyer](#) for more information.

These pricing arrangements apply to new residents entering care on or after November 1, 2025. The agreed Daily Accommodation Payment may be deducted from the Refundable Accommodation Deposit in order to meet an agreed amount of accommodation payment. This will result in additional interest amounts being charged on the amount deducted. Residents or their representatives may wish to seek independent financial advice regarding which option suits their specific financial circumstances.

Prices are current as at April 17, 2026, 7:28 pm and are subject to change without notice.

MPIR rate: Currently 7.96% and is updated quarterly by the Federal Government.