

Trowbridge House

– Classic Vista Room



1



1

Extensive gardens sheltered entertaining areas and light-filled community rooms enable residents to enjoy an active social calendar at Trowbridge House. With residents from a diverse range of cultural backgrounds, there are some wonderful celebrations held to recognise important occasions. The support unit is specially-designed to support residents living with dementia and features a secure sensory garden.

[Our dedicated chef prepares all food on-site daily](#) with a two-course meal served for lunch and a three-course meal served in the evening.

Health professionals visit regularly including a speech pathologist and podiatrist.

Residents can get their hair done in Trowbridge House's on-site hairdressing salon with appointments available once a week at additional cost. A beauty therapist also visits monthly offering nail care, massages and facials.

ADDRESS

9 Luhrs Road , Payneham South SA 5070

Location and Access

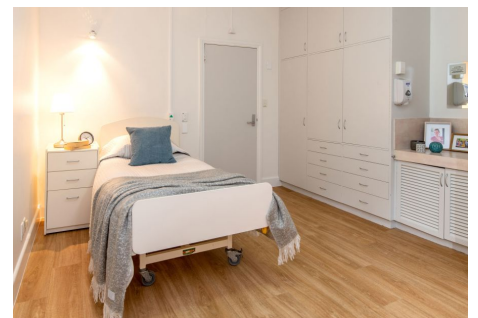
Trowbridge House is located in the north-eastern suburb of Payneham South close to Portrush Road and [Firle Plaza](#). The Adelaide CBD and premium shopping precincts [Burnside Village](#) and [Norwood Parade](#) are also a short drive away and several bus stops are located on neighbouring roads.

General Inclusions

- An electric adjustable high/low bed, bedside cabinet, bedside chair and overway table
- A built-in wardrobe which includes a chest of drawers with a lockable drawer
- Private ensuite consists of a toilet, shower, vanity basin and vanity cabinet
- Reverse-cycle heating and cooling with individual temperature control
- Private phone connection available
- A call button and access to 24 hour nursing care

Trowbridge House - Classic Vista Room Inclusions

- Private ensuite
- Pleasant outlook
- Rooms are 16 sq. m



Classic Vista Room at Trowbridge House

Accommodation

To enter residential care, you will be required to pay accommodation costs and care fees. We also provide Additional and/or Extra Services packages depending on the facility you choose.

Refundable Accommodation Deposit (RAD)	Up to \$450,000
Maximum Permissible Interest Rate (MPIR)	8.34%
Daily Accommodation Payment (DAP)	Up to \$102.82 per day

For those that are required to contribute towards their accommodation costs there are three options:

1. A fully refundable accommodation deposit (RAD)
2. Non-refundable daily accommodation payments (DAP)
3. A combination of both

The RAD is based on the published price of your preferred room type.

The DAP is calculated from the RAD amount of your preferred room type and is broken down into a daily payment; similar to rent. A government-prescribed interest rate, called the Maximum Permissible Interest Rate (MPIR), applies to this payment.

EXAMPLE 1	EXAMPLE 2
RAD \$150,000	RAD \$250,000
DAP \$68.55 per day	DAP \$45.7 per day

Residents with limited financial means may have part, or all, of their accommodation costs paid for by the Australian Government.

Care

The care fee covers day-to-day assistance from carers and clinical staff, wellbeing activities and services such as catering, laundry, cleaning and gardening. It is made up of:

1. Basic Daily Care fee:

Every person entering residential care pays a Basic Daily Care fee which is set at 85% of Centrelink's single, full Age Pension.

2. Means-tested care fee:

An additional contribution towards the cost of your care based on your asset and income levels. This fee is set by the Department of Human Services when they receive your completed Request for a Combined Assets and Income Assessment form.

Additional services

To complement our high quality service, we provide an Additional Services package that includes a variety of features for your added care and comfort. [View the Additional Services flyer](#) for more information.

These pricing arrangements apply to new residents entering care on or after July 1, 2014. The agreed Daily Accommodation Payment may be deducted from the Refundable Accommodation Deposit in order to meet an agreed amount of accommodation payment. This will result in additional interest amounts being charged on the amount deducted. Residents or their representatives may wish to seek independent financial advice regarding which option suits their specific financial circumstances.

Prices are current as at May 5, 2024, 8:56 pm and are subject to change without notice.

MPIR rate: Currently 8.34% and is updated quarterly by the Federal Government.